

COBBER

Bathroom and kitchen mixers
Mélangeurs pour bain et cuisine
Armaturen für Bad und Küche
Miscelatori per bagno e cucina

hotbath

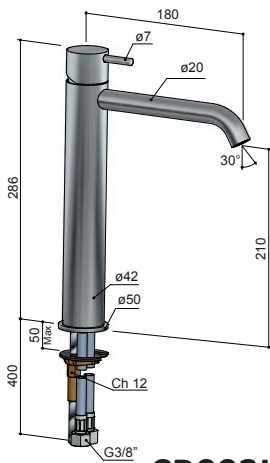
italian bathroomware

Hotbath Srl
Via Marco Polo 135/D • I-55049 • Viareggio • Italy
info@hotbath.it • www.hotbath.it

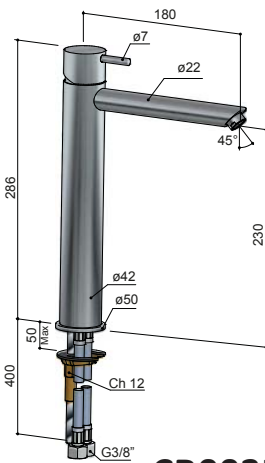


BEFORE STARTING / PRIMA DI INIZIARE / AVANT DE COMMENCER / VOR DEM START

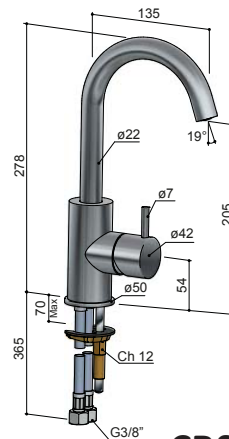
 P bar	 MAX 5 MIN 1	 MAX 3 MIN 1				FILTER TAPS RECOMMENDED
 T °C	 MAX 80	 MAX 60 45				



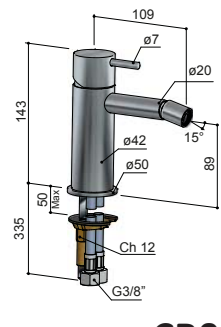
CB003HC



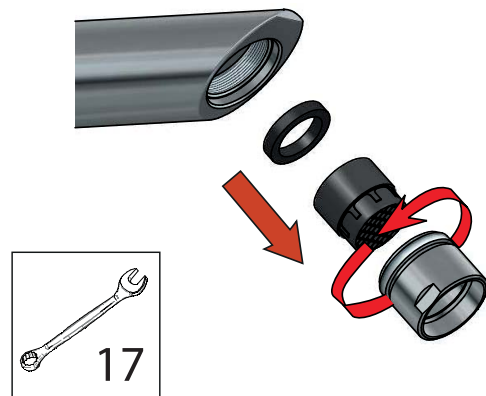
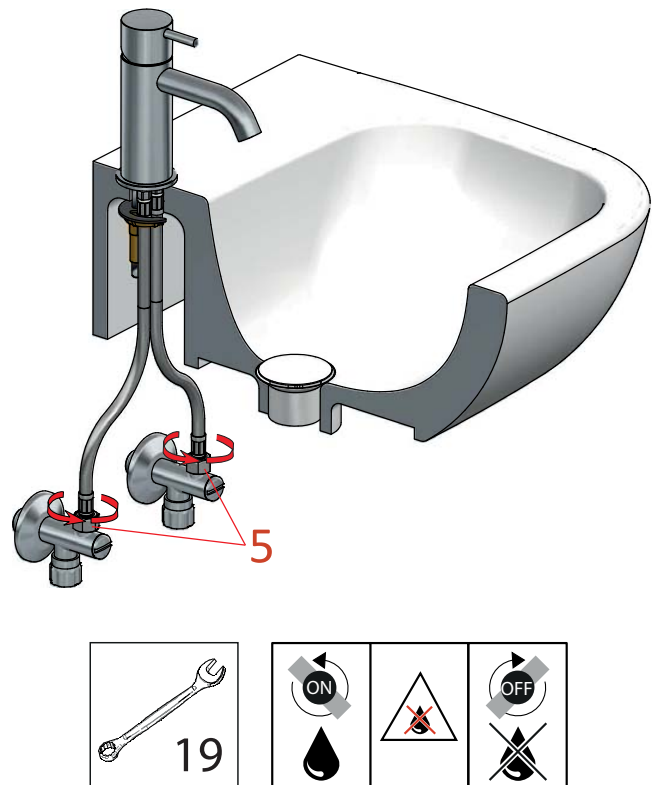
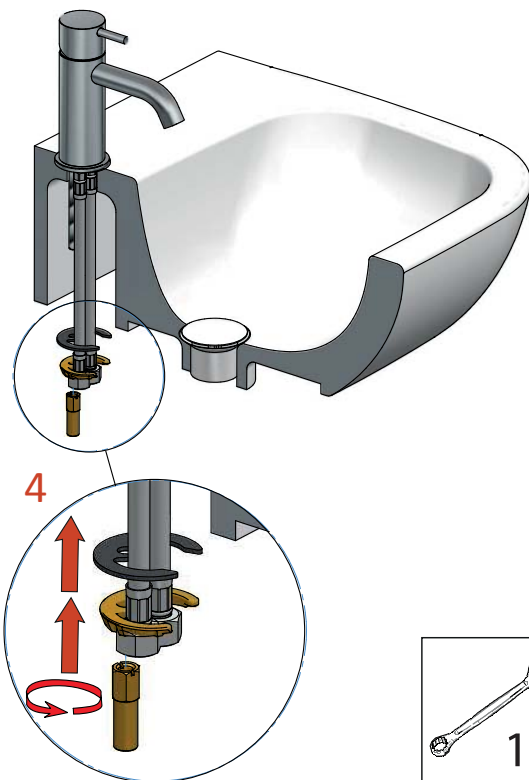
CB003HS



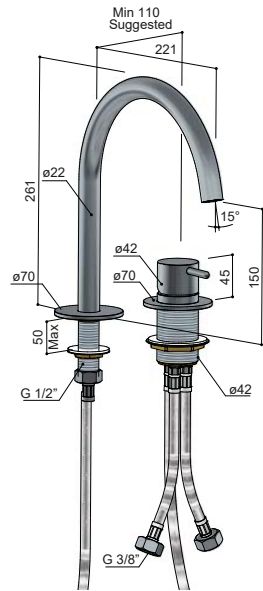
CB004



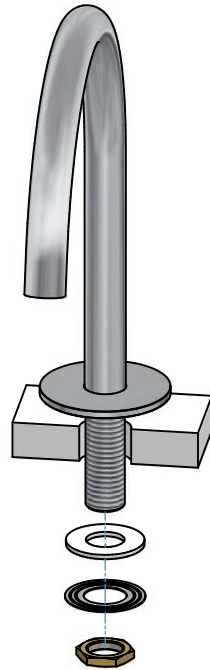
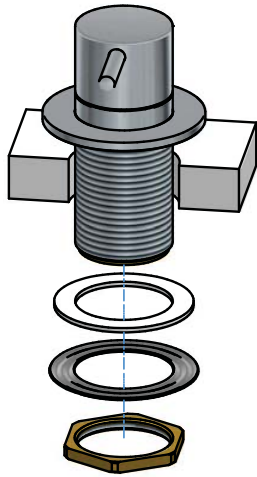
CB018



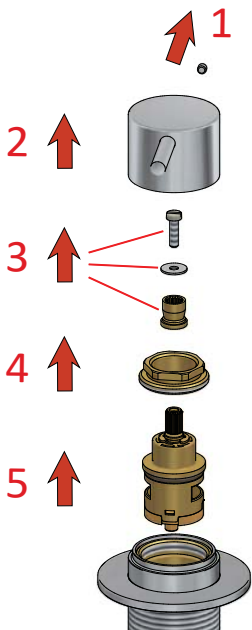
INSTALLATION



CB023



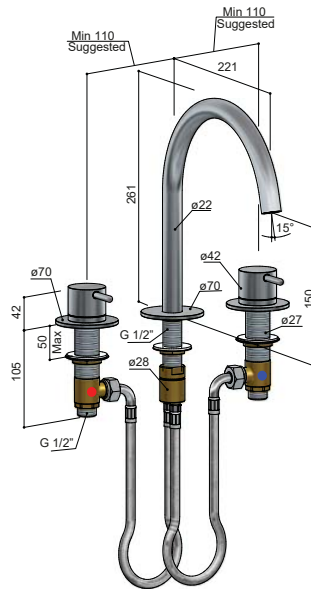
MAINTENANCE



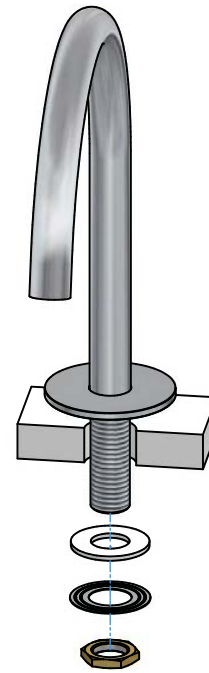
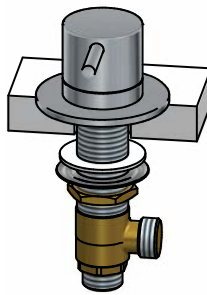
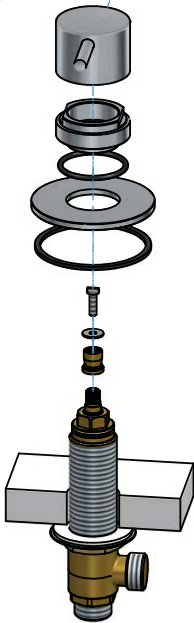
	MAX TIGHTENING TORQUE 30 Nm
	24



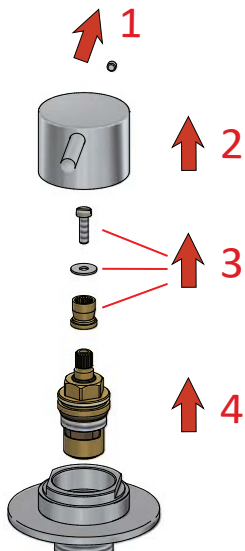
INSTALLATION



CB033



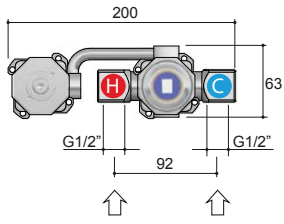
MAINTENANCE



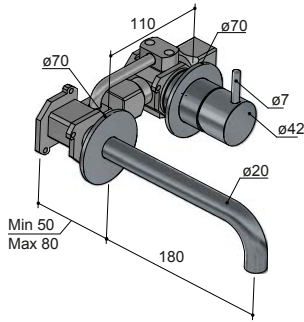
	<p>MAX TIGHTENING TORQUE</p> <p>30 Nm</p>
	<p>17</p>



CB005-18



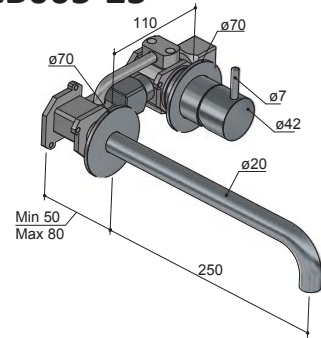
HB.CB005



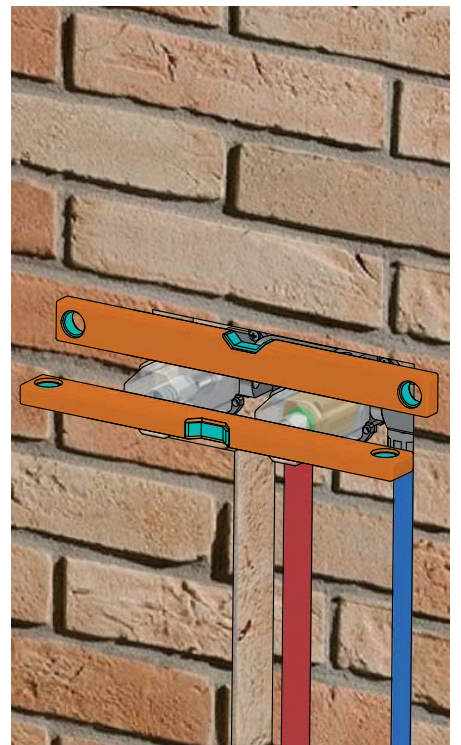
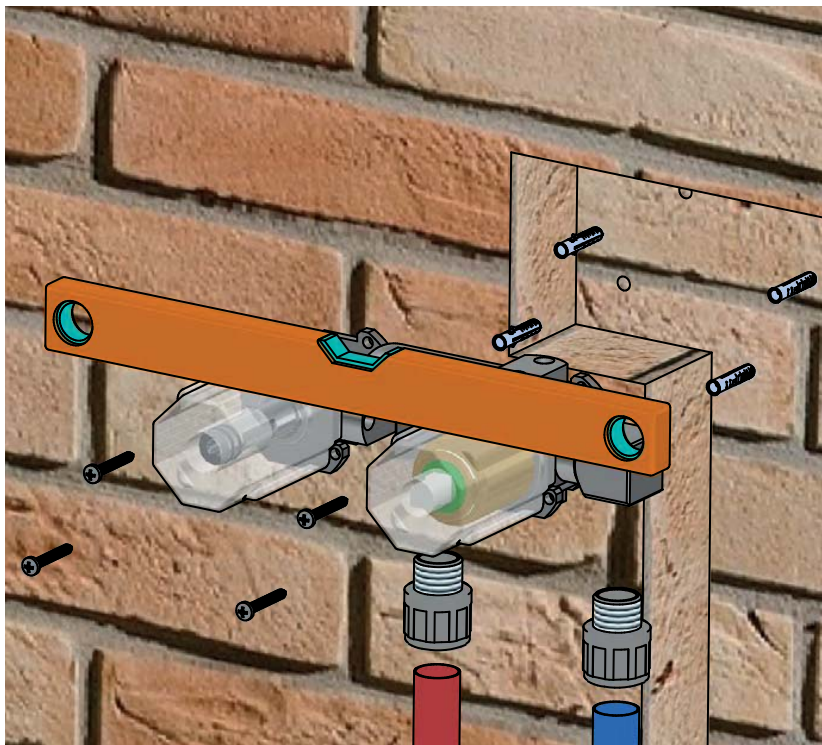
CB005EXT.18..



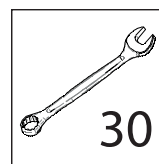
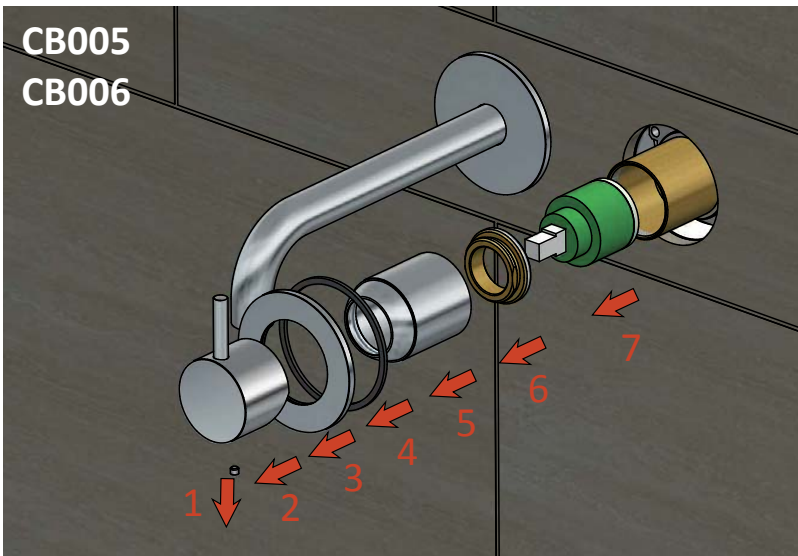
CB005-25



CB005EXT.25..

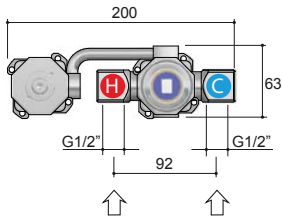


**CB005
CB006**

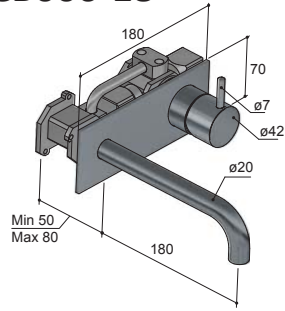


**MAX TIGHTENING
TORQUE
10-12 Nm**

CB006-18



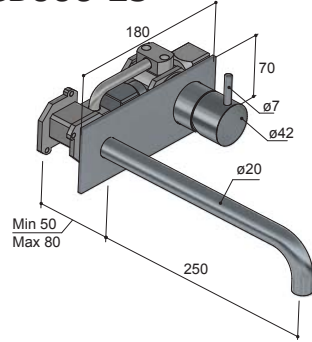
HB.CB006



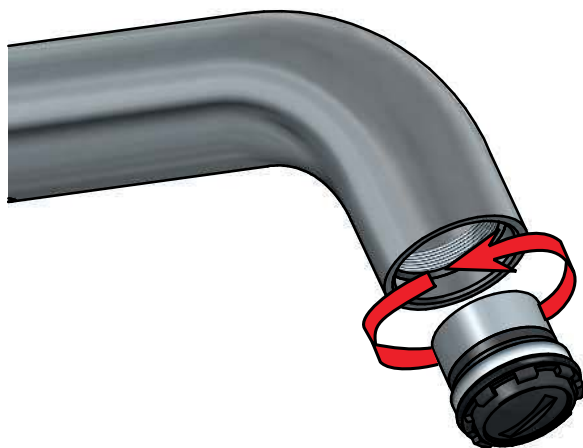
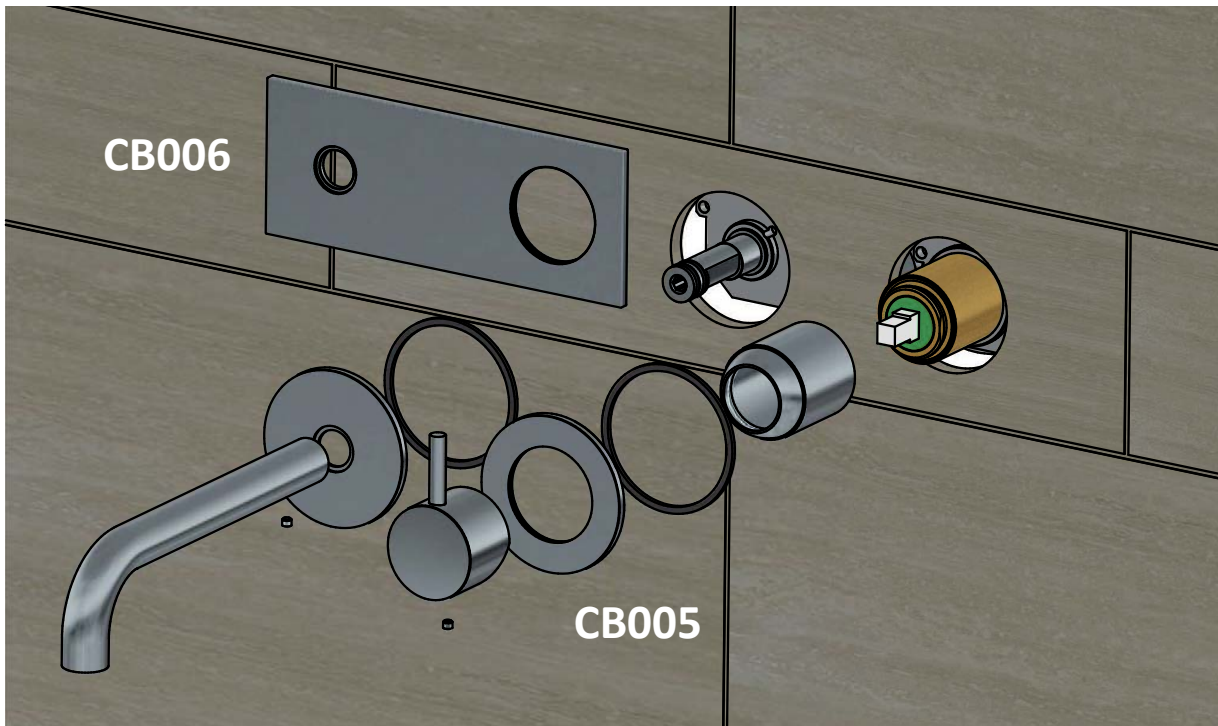
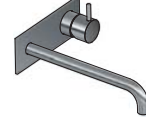
CB006EXT.18..

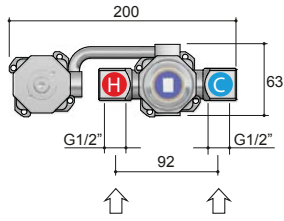


CB006-25

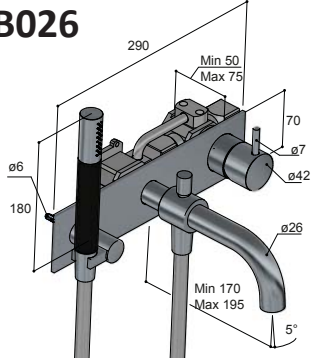


CB006EXT.25..

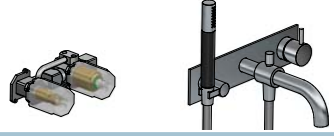




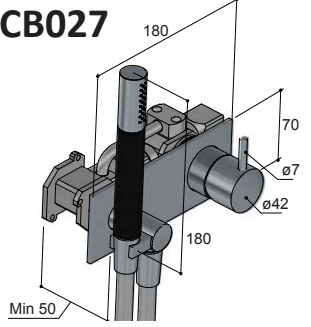
CB026



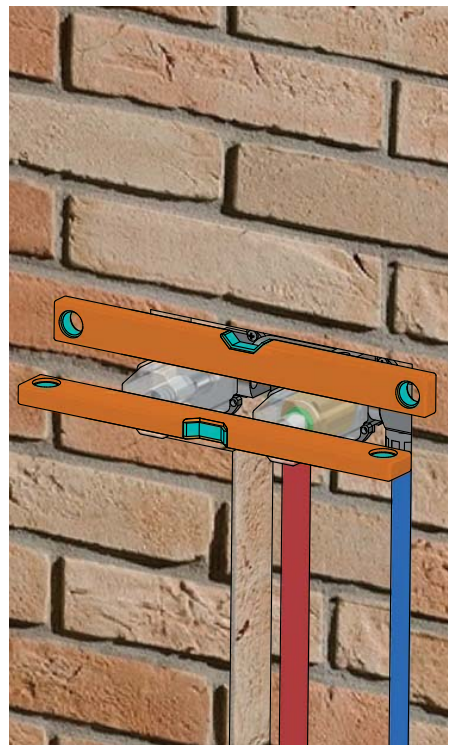
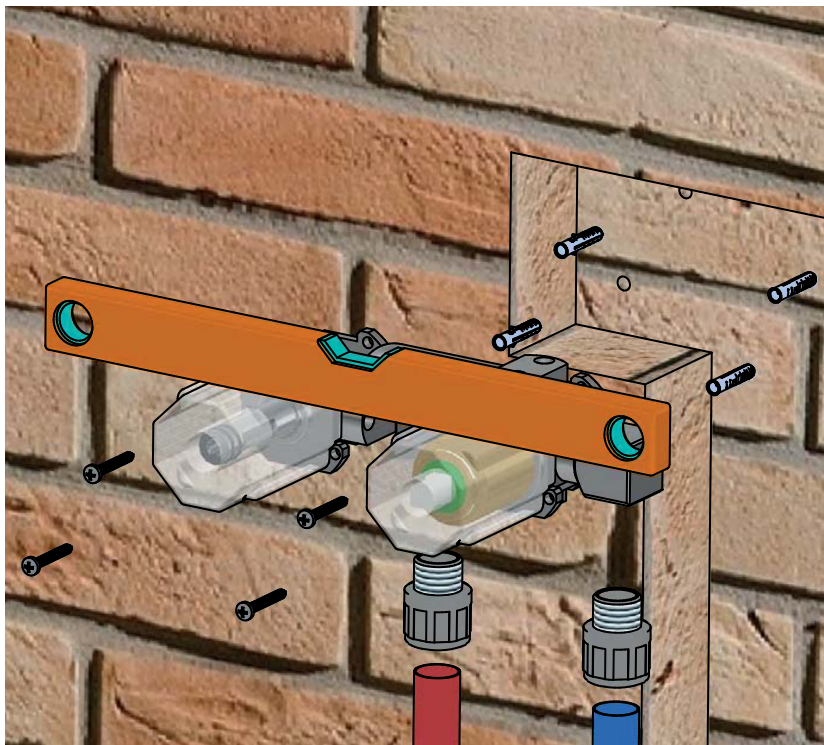
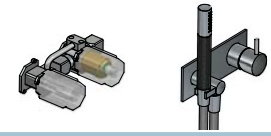
HB.CB026 CB026EXT..



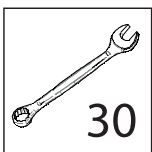
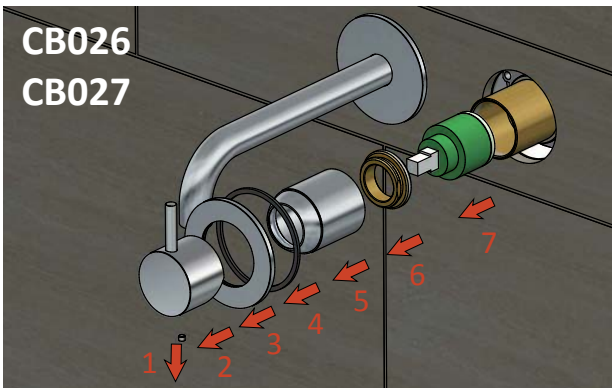
CB027



HB.CB027 CB027EXT..

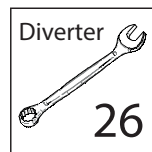
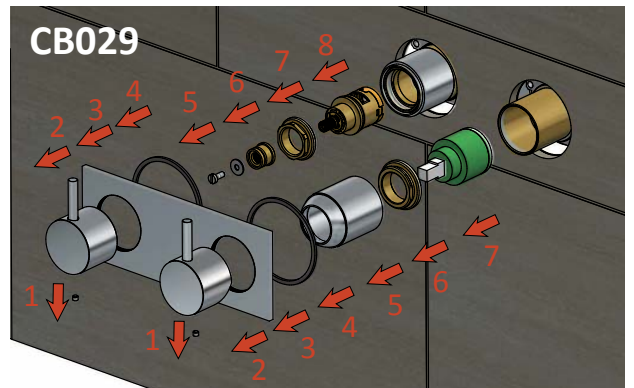


**CB026
CB027**



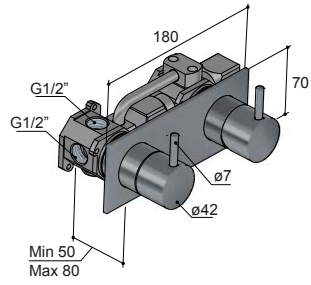
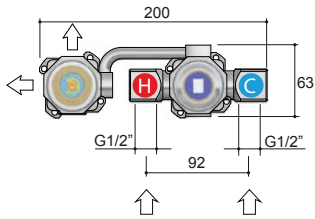
MAX TIGHTENING TORQUE
10-12 Nm

CB029

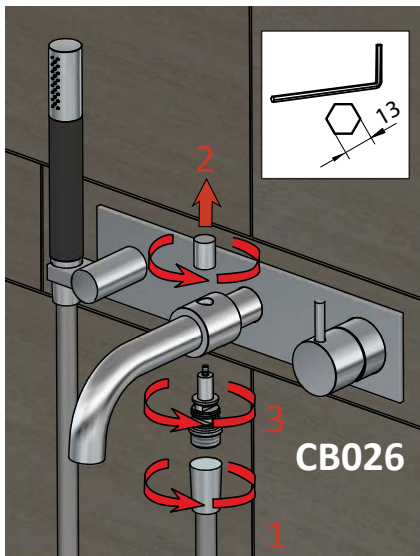
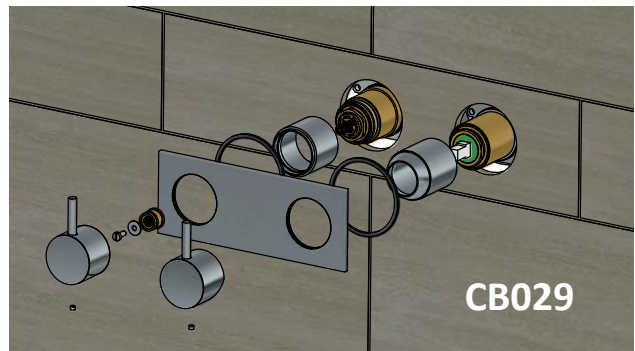
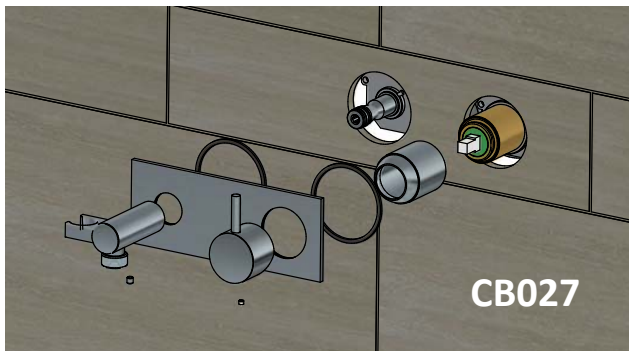
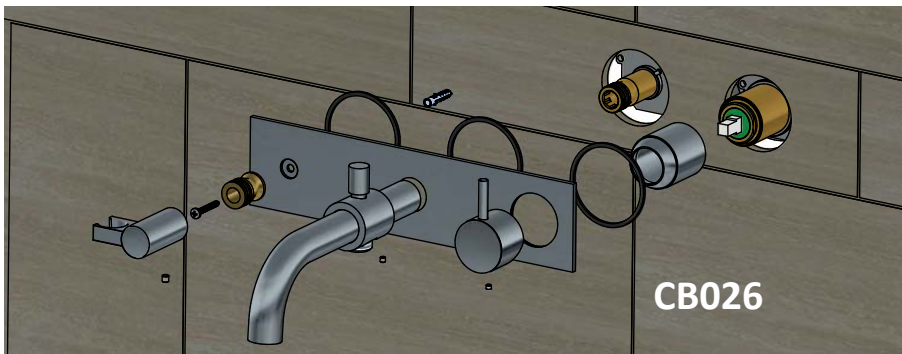
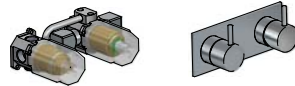


MAX TIGHTENING TORQUE
30 Nm

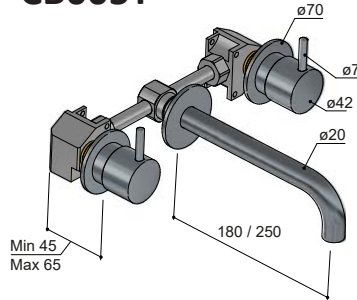
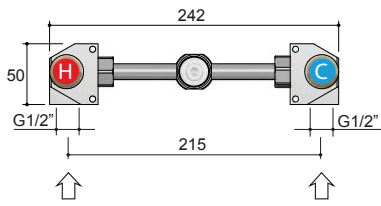
CB029



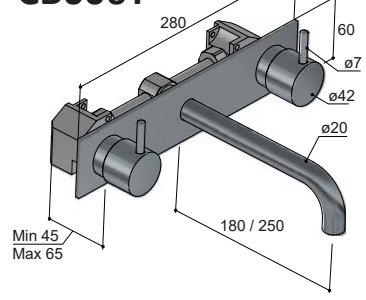
HB.CB029 CB029EXT..



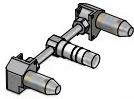
CB005T



CB006T



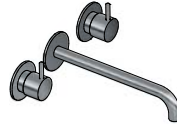
HBCB005T



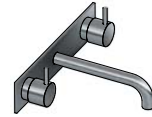
CB005TEXT.18



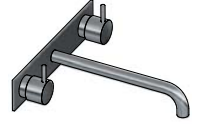
CB005TEXT.25



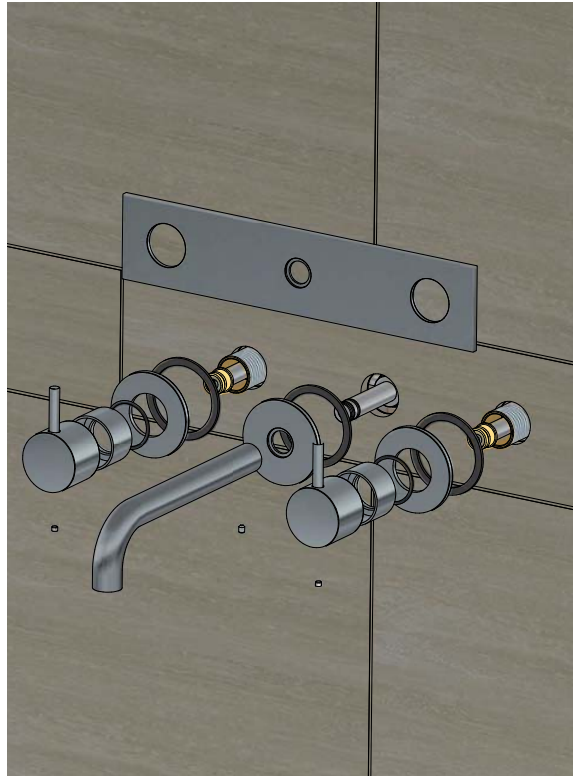
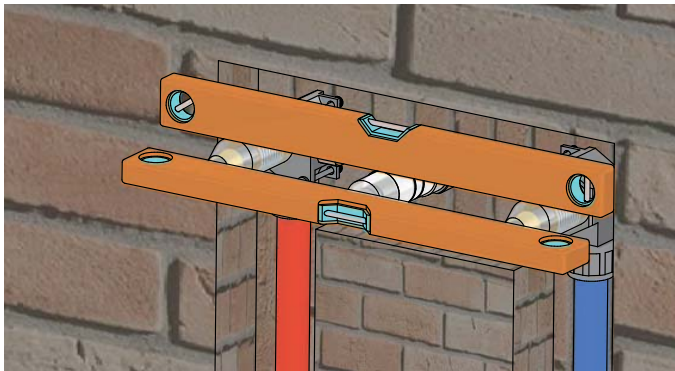
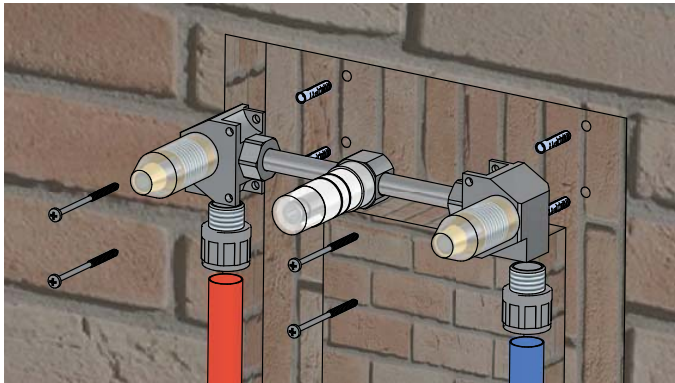
CB006TEXT.18



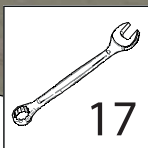
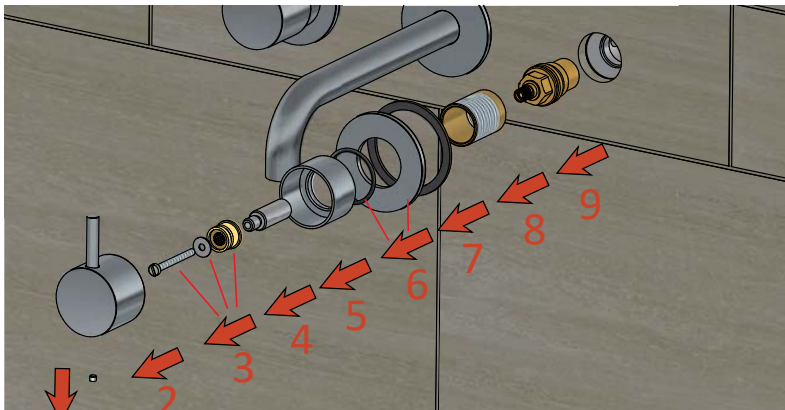
CB006TEXT.25



INSTALLATION



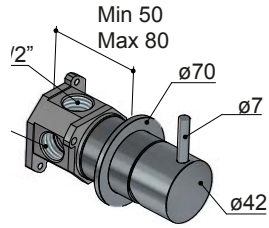
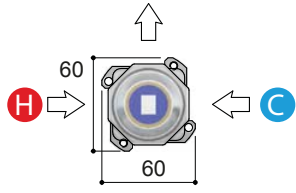
MAINTENANCE



MAX TIGHTENING
TORQUE
30 Nm



CB031



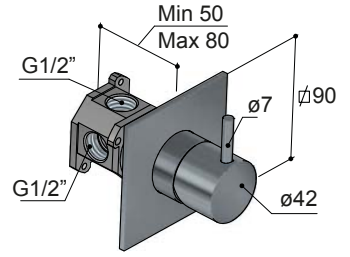
HB.CB031



CB031EXT..



CB031Q



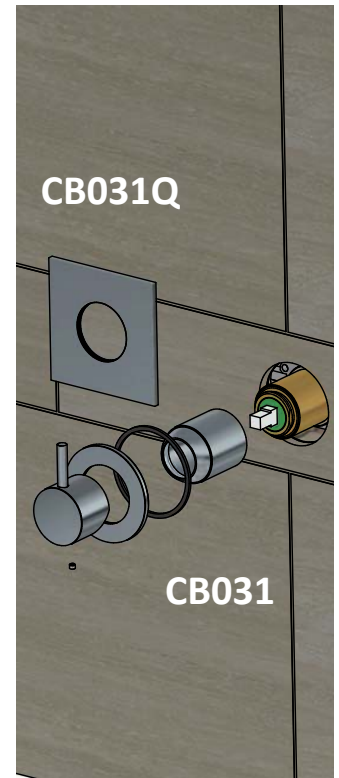
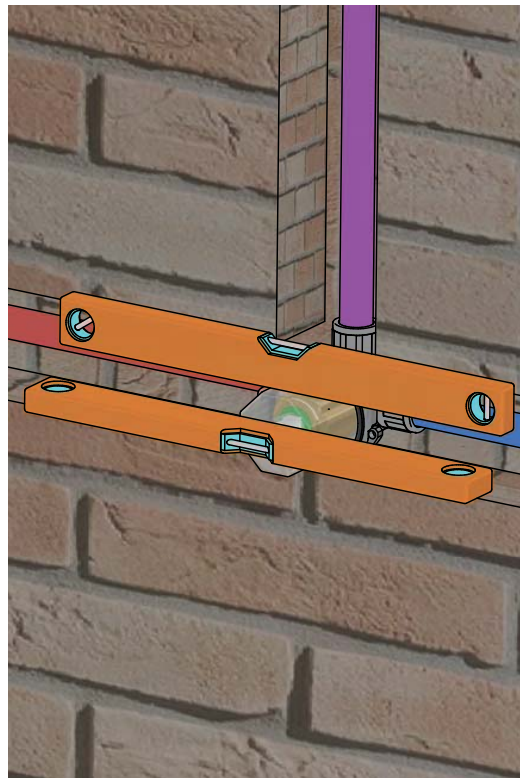
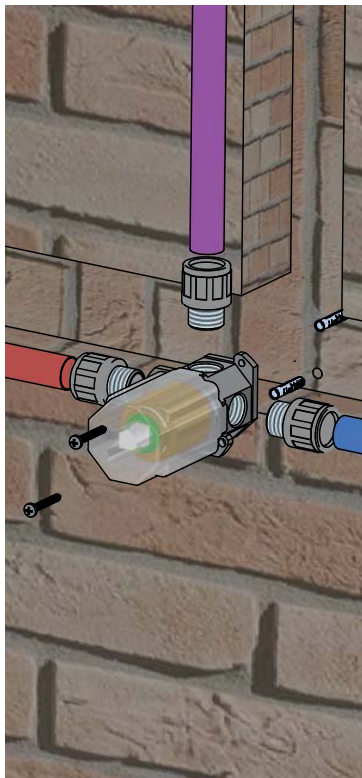
HB.CB031



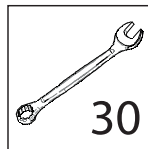
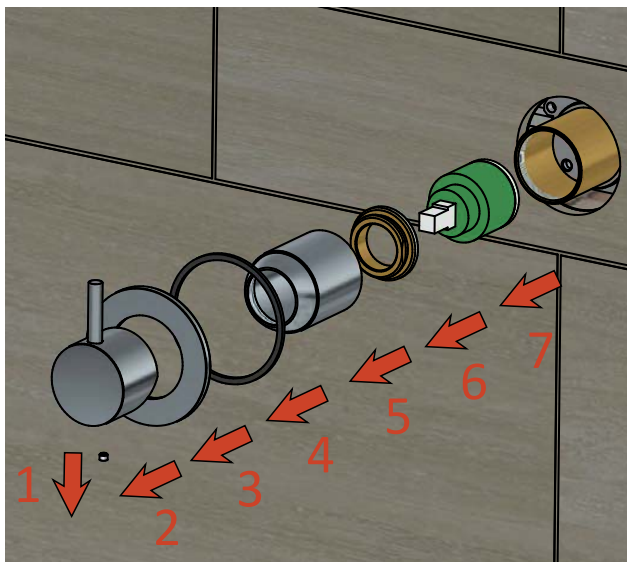
CB031QEXT..



INSTALLATION

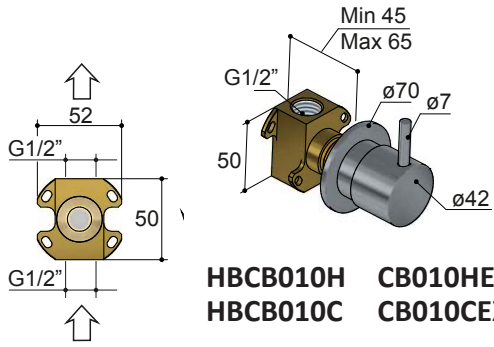


MAINTENANCE

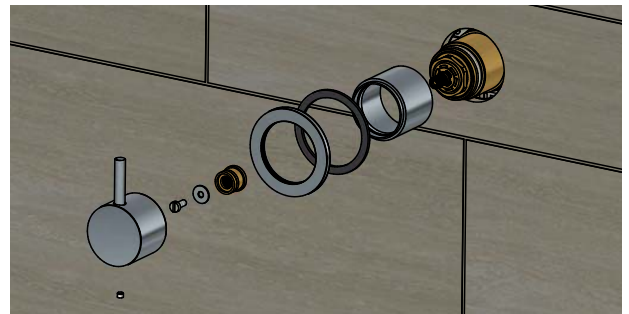
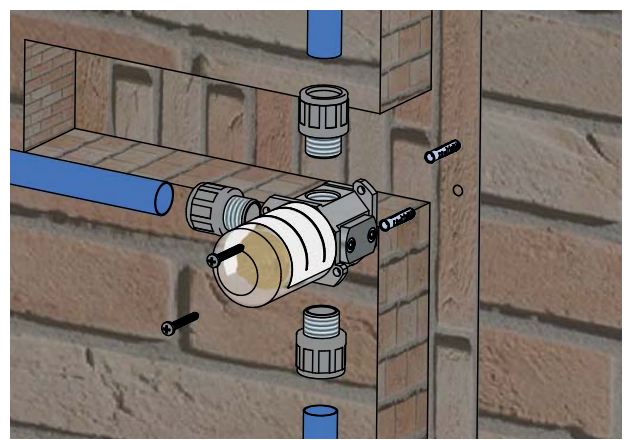
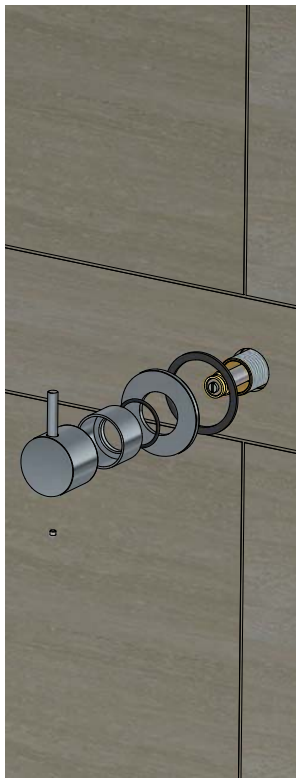
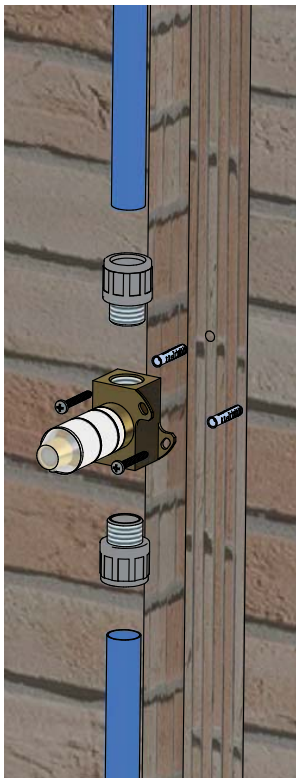
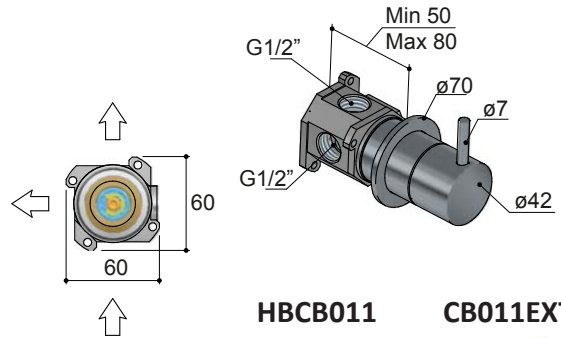


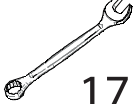
MAX TIGHTENING
TORQUE
10-12 Nm

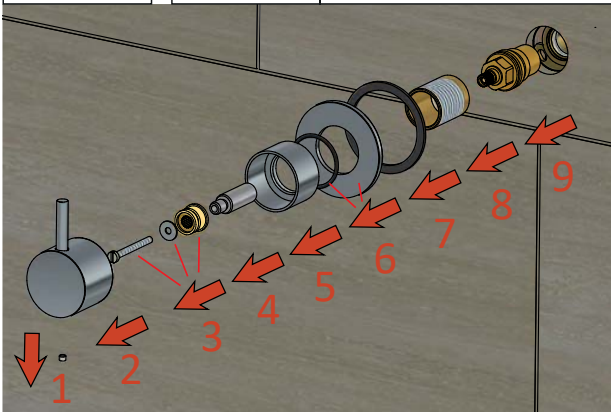
CB010H - CB010C



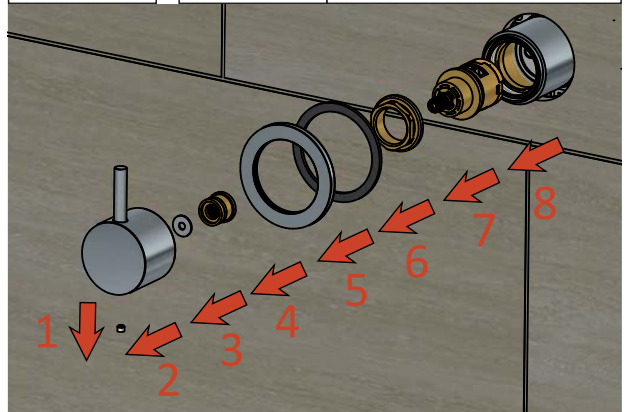
CB011



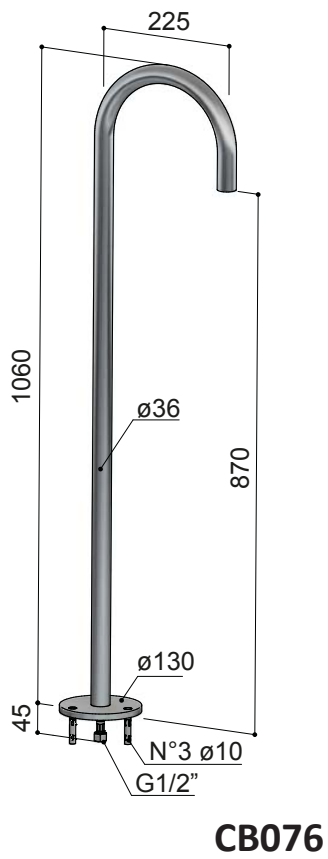
		MAX TIGHTENING TORQUE 30 Nm
17		



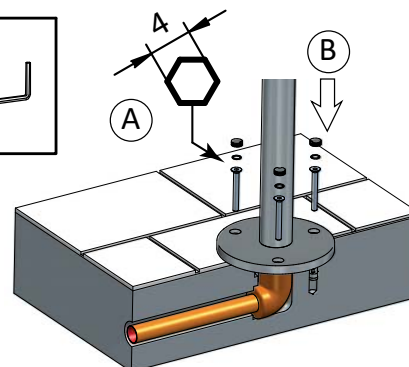
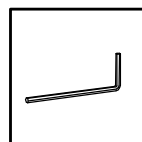
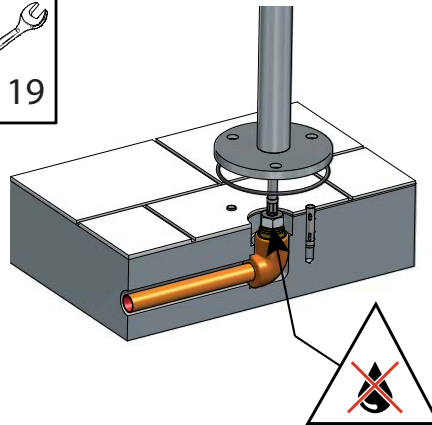
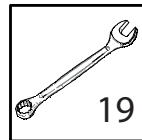
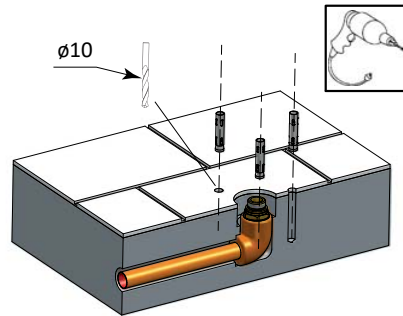
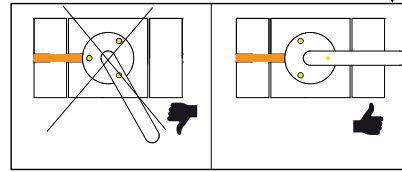
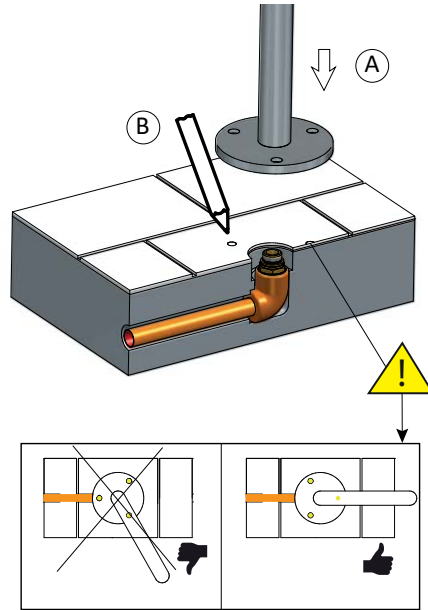
		MAX TIGHTENING TORQUE 30 Nm
Diverter 26		

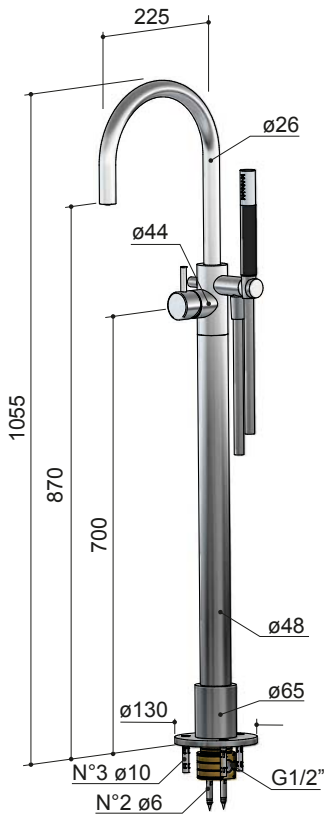


INSTALLATION

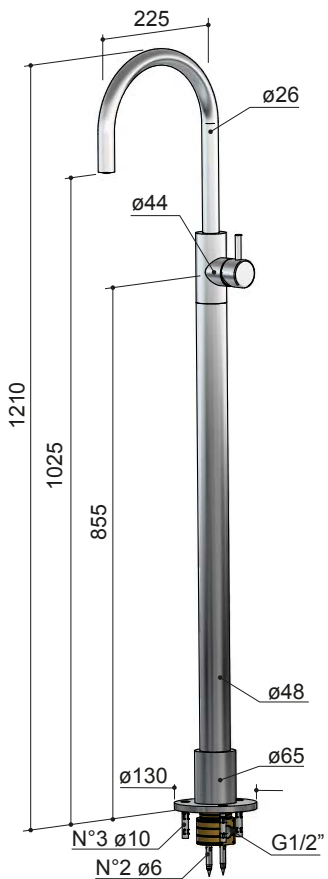


MAINTENANCE

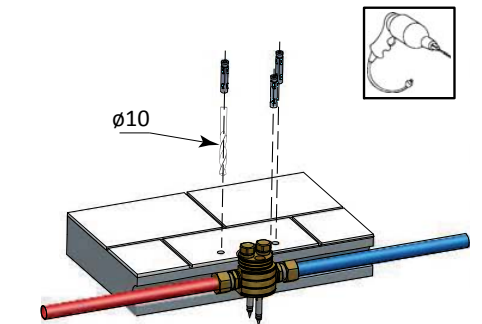
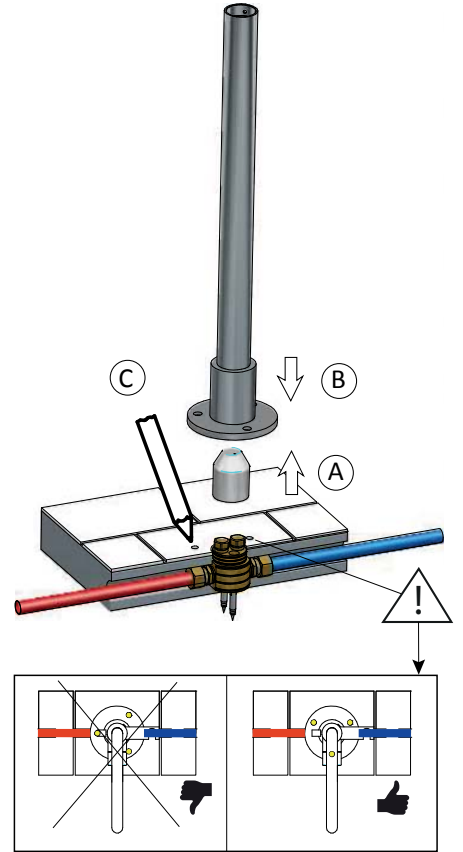
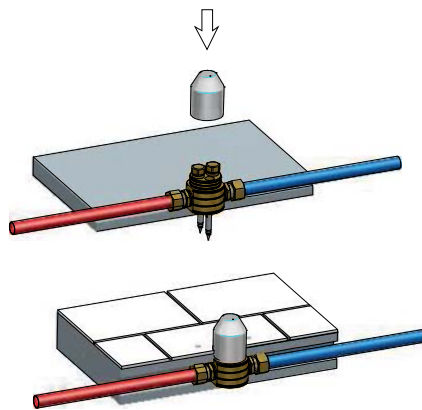
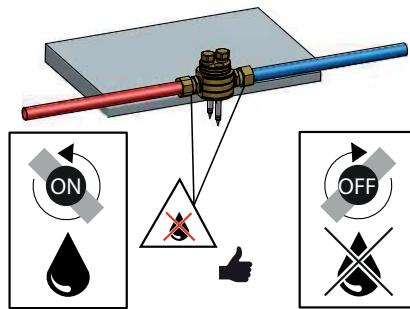
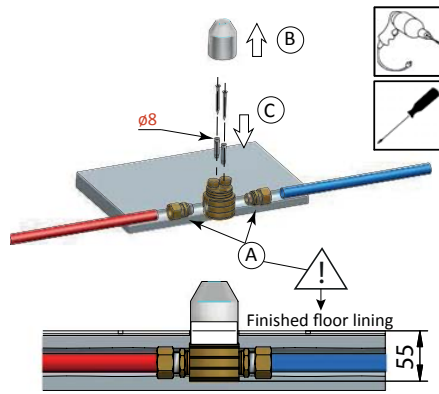




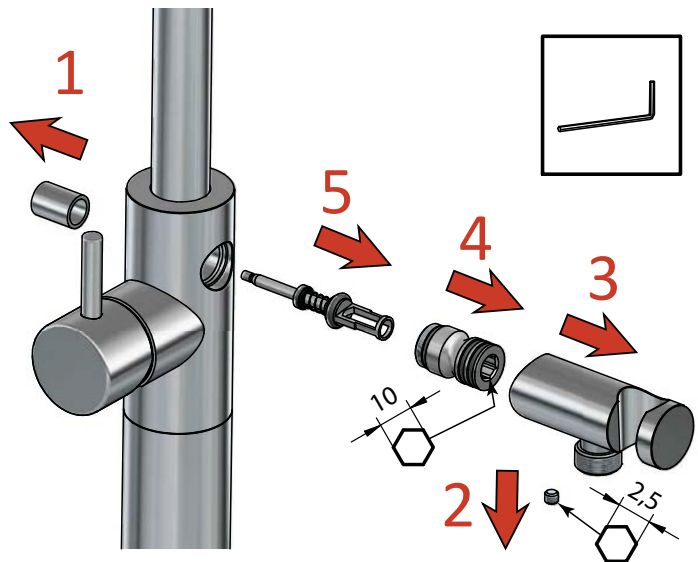
CB077



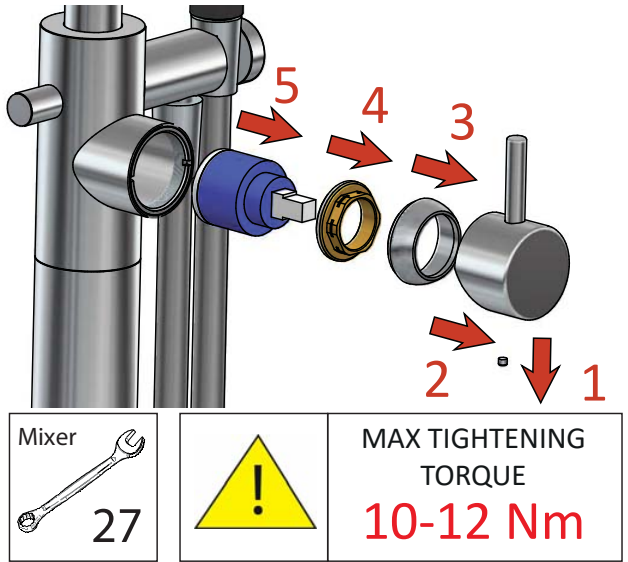
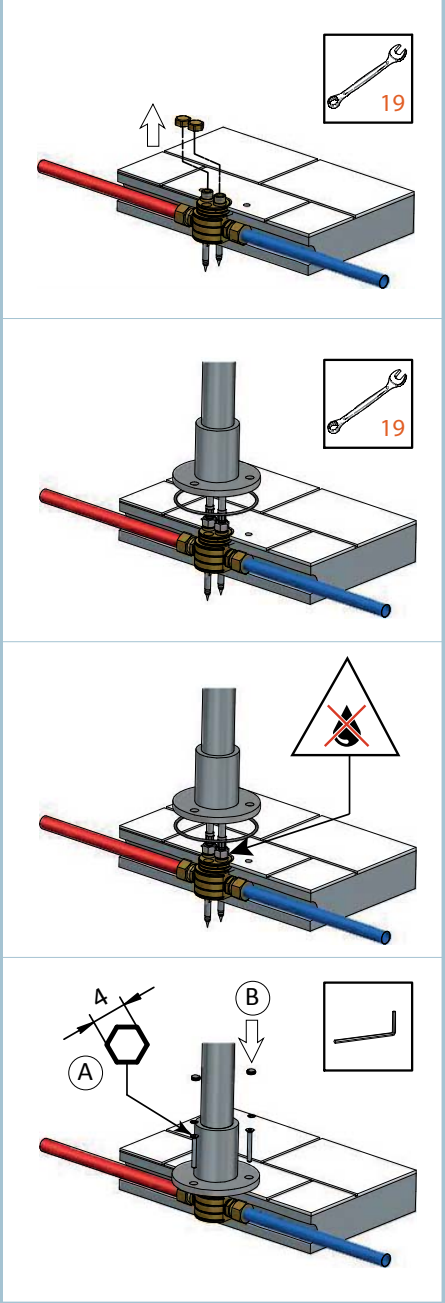
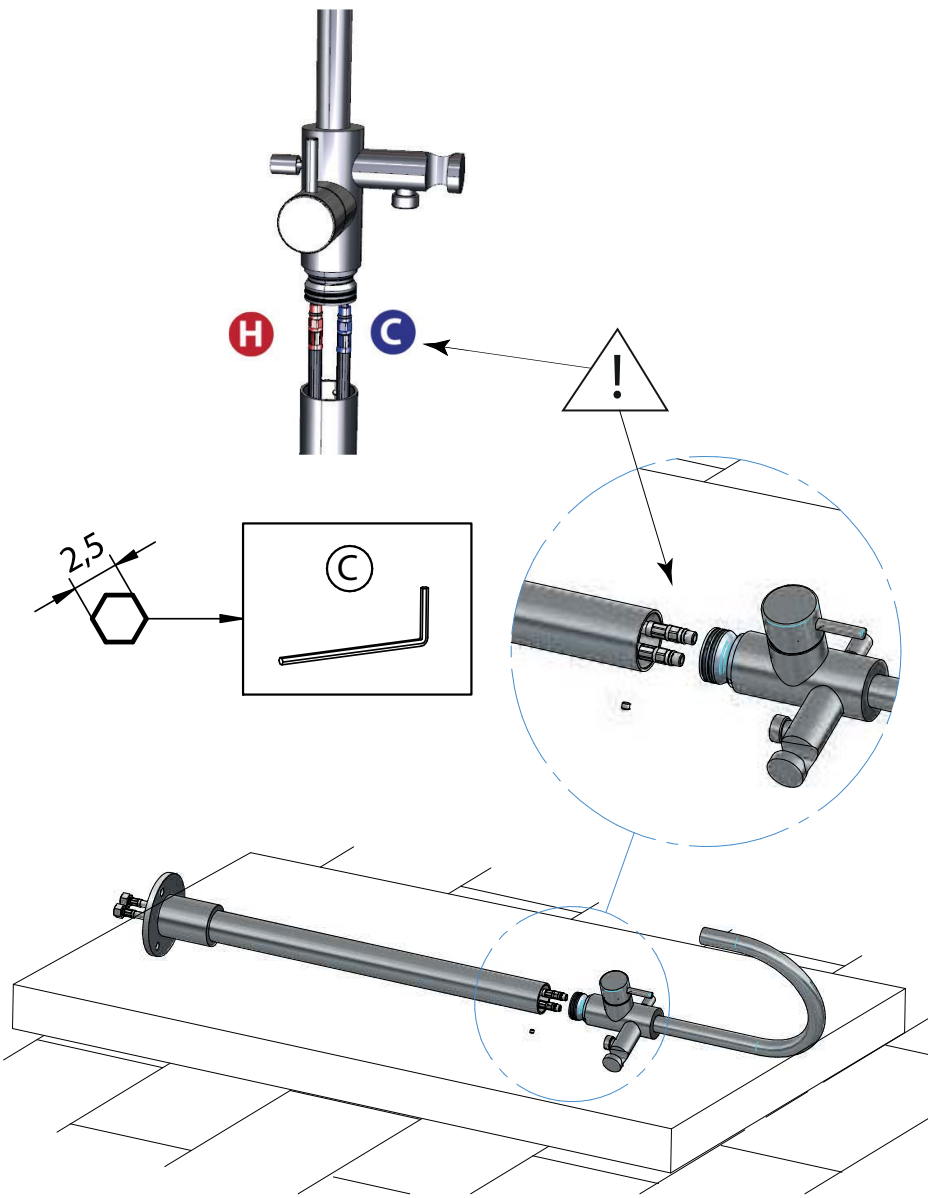
CB078W

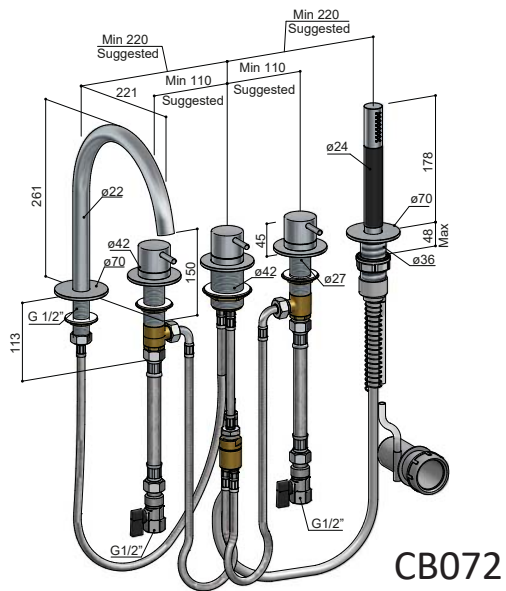


MAINTENANCE

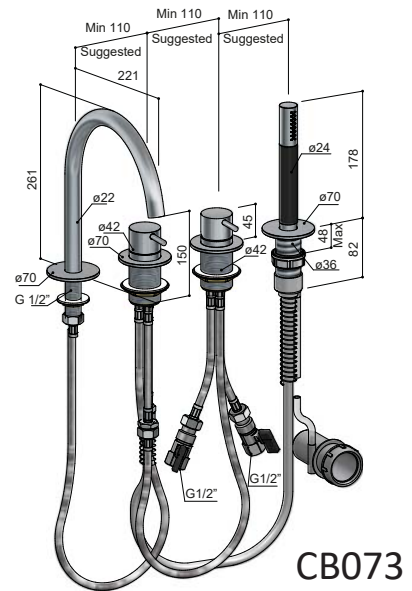


INSTALLATION

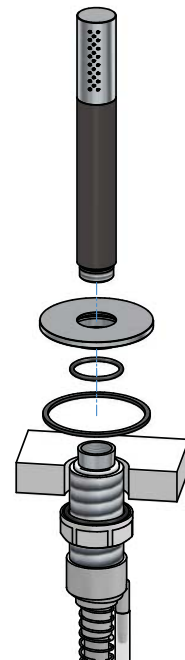
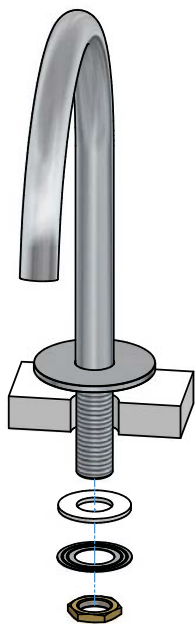
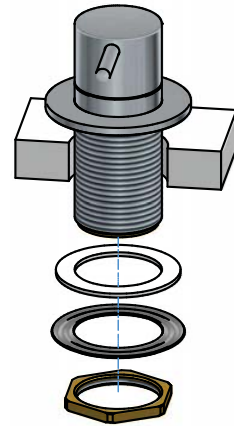
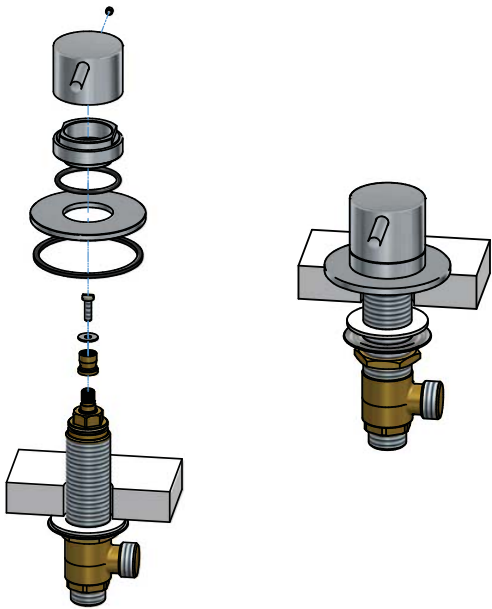


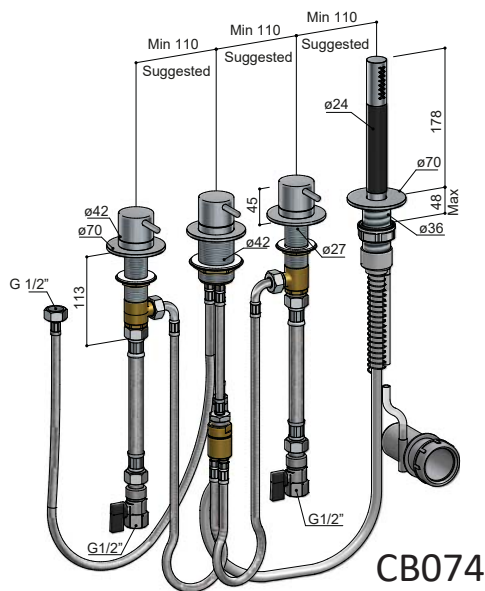


CB072

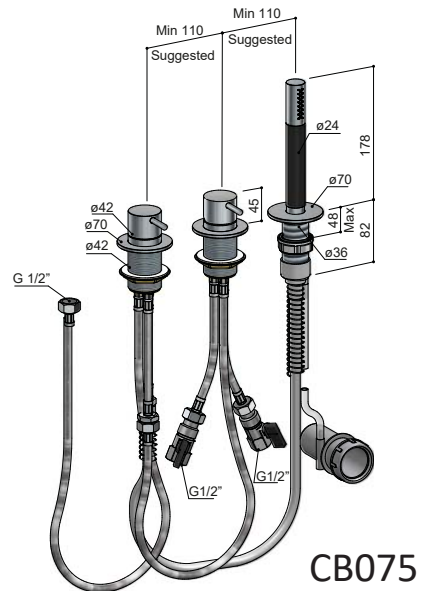


CB073

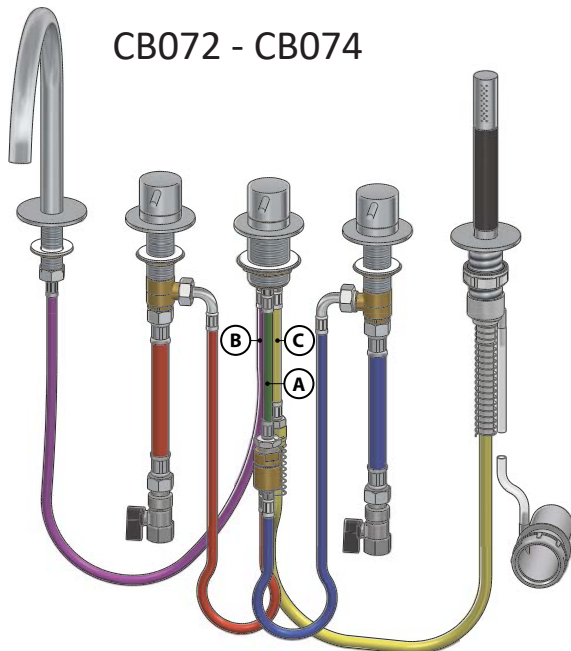




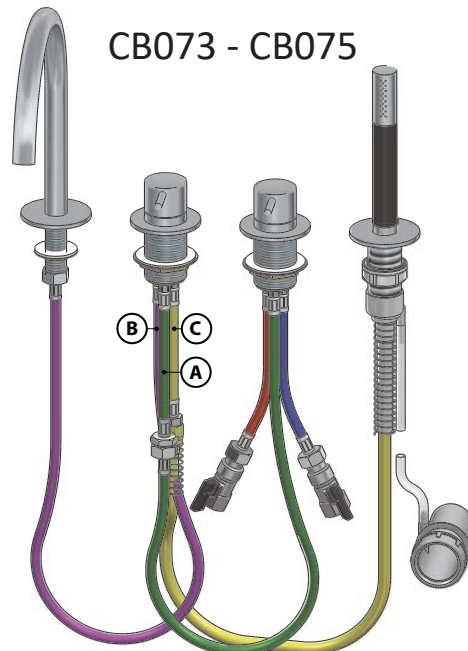
CB074



CB075



CB072 - CB074

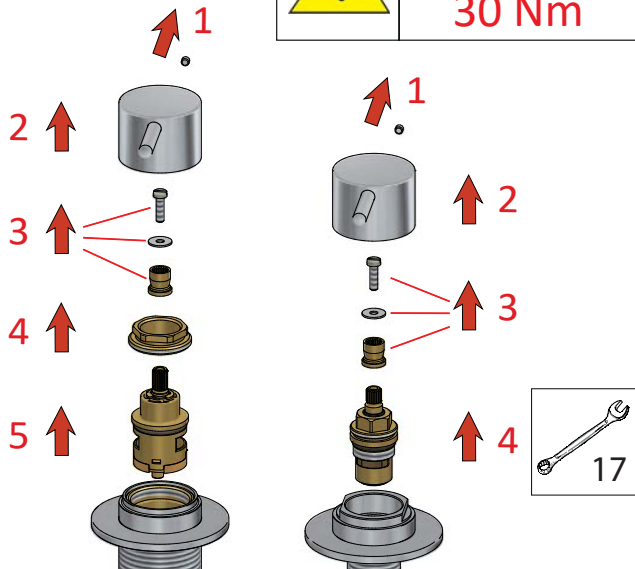


CB073 - CB075

MAINTENANCE



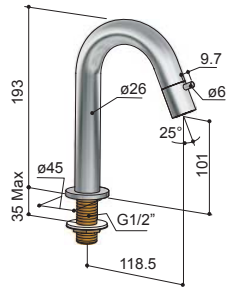
MAX TIGHTENING TORQUE
30 Nm



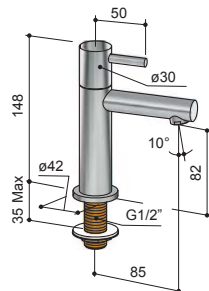
- (A)
INLET - ENTRATA
ENTRÉE - EINLAß
- (B)
SPOUT OUTLET - USCITA PER BOCCA
SORTIE POUR BEC - AUSLAß FÜR AUSLAUF
- (C)
HAND SHOWER OUTLET - USCITA PER DOCCETTA
SORTIE POUR DOUCHETTE - AUSLAß FÜR HANDBRAUSE



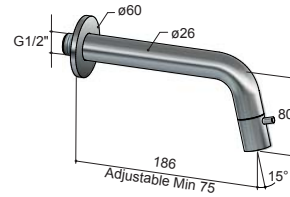
INSTALLATION



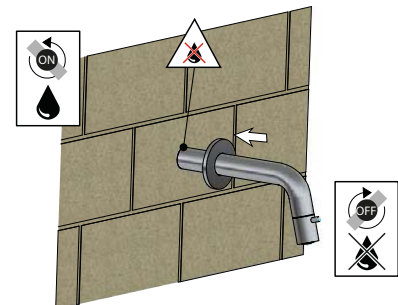
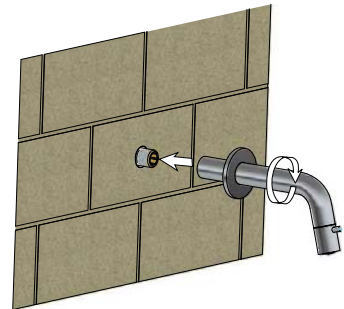
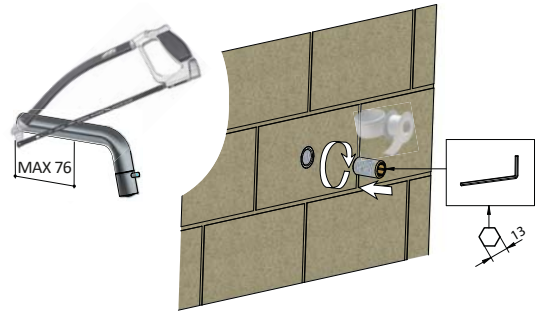
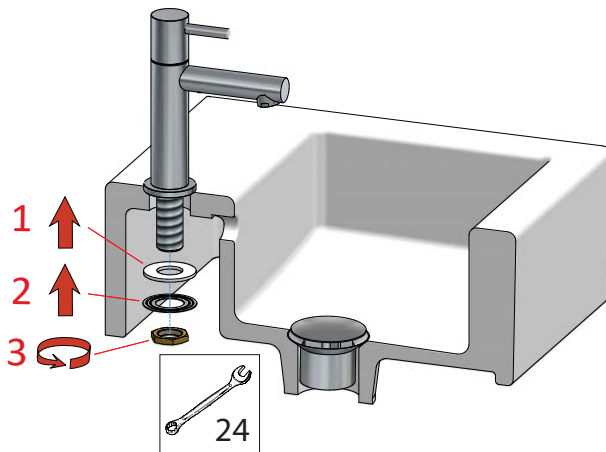
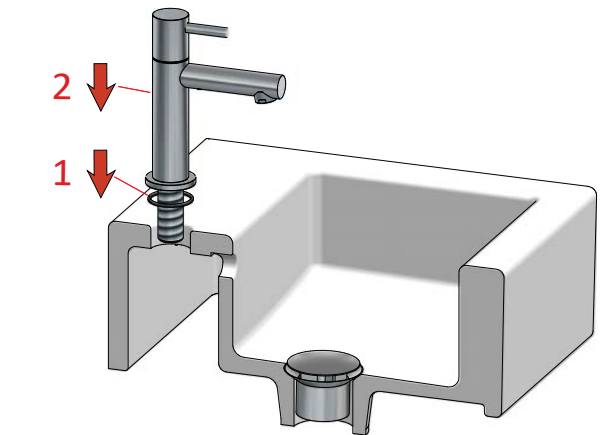
U001



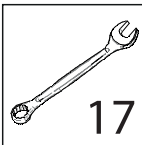
E001



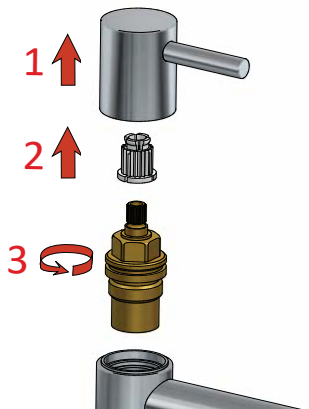
UW001



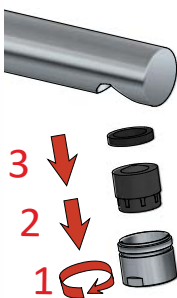
MAINTENANCE



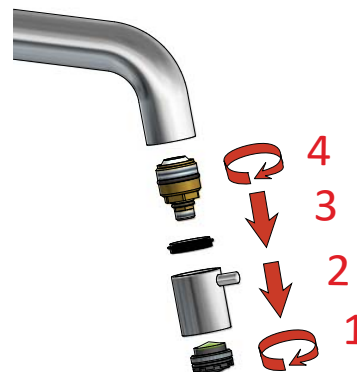
MAX TIGHTENING TORQUE
30 Nm

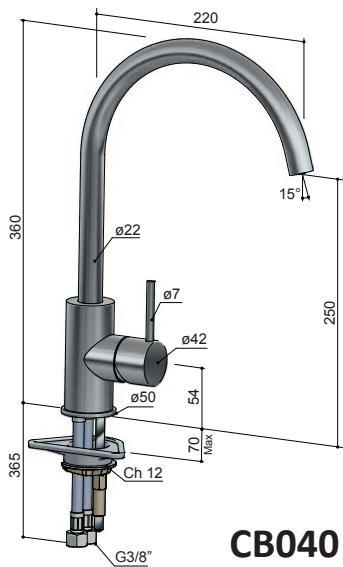


E001

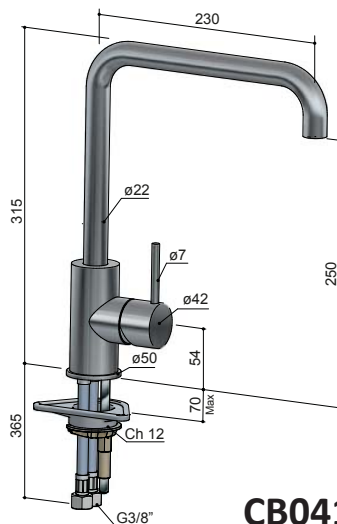


U001 - UW001



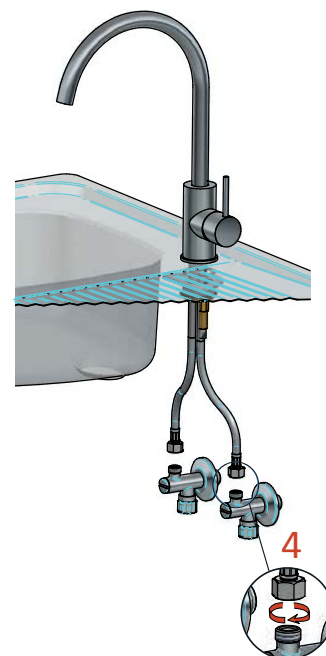
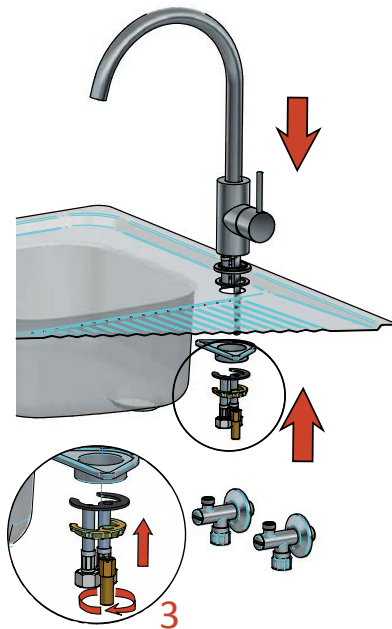
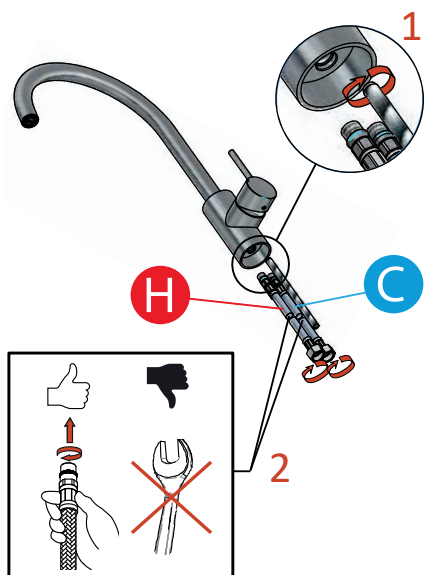


CB040

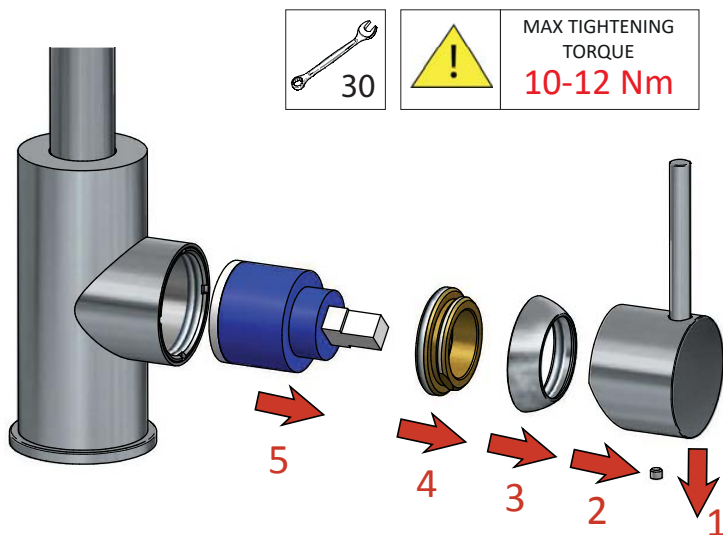


CB041

INSTALLATION



MAINTENANCE



CLEANING / PULIZIA / NETTOYAGE / REINIGUNG

MAINTENANCE - Never use for any reason cleaning solutions containing abrasive substances, chloric acids, ammonia, vinegar, bleach, domestic acids, disinfectants, or any type of abrasive pad. Warning! Incorrect cleaning may permanently ruin the surface of the products and in such case the manufacturer may not be held liable for damage.

MANUTENZIONE - Non usare mai per qualsiasi motivo soluzioni detergenti contenenti sostanze abrasive, acido clorico, ammoniaca, aceto, candeggina, acidi domestici, disinfettanti o qualsiasi tipo di spugna o panno abrasivo. Attenzione! Una pulizia errata può rovinare in modo permanente la superficie dei prodotti e in tal caso il Produttore non può essere ritenuto responsabile per danni.

ENTRETIEN - N'utilisez jamais des solutions de nettoyage contenant substances abrasives, acide chlorique, vinaigre, eau de javel, acides domestiques, désinfectants ou tout type de tissu abrasif. Attention! Un nettoyage incorrect peut endommager de manière permanente la surface des produits et, dans ce cas, le Fabricant ne pourra être tenu responsable des dommages.

WARTUNG - Verwenden Sie niemals Reinigungslösungen, die Schleifmittel, Chlorsäure, Ammoniak, Essig, Bleichmittel, Haushalts Säuren, Desinfektionsmittel oder andere Arten von Schleifmitteln enthalten. Warnung! Durch eine falsche Reinigung kann die Oberfläche der Produkte dauerhaft beschädigt werden. In diesem Fall ist der Hersteller nicht für Schäden haftbar.

	✓		✗		WARNING	
CR CHROME						Inoxidizable plated finish Finitura placcata inossidabile Finition plaquée inoxydable Inoxidierbare plattierte Ausführung
GN BRUSHED NICKEL						Inoxidizable plated finish Finitura placcata inossidabile Finition plaquée inoxydable Inoxidierbare plattierte Ausführung
NI BRIGHT NICKEL						Oxidizable plated finish Finitura placcata ossidabile Finition plaquée oxydable Oxidierbare plattierte Ausführung
NB NATURAL BRASS						Natural metal finish: patina will form over time Finitura di metallo naturale: si formerà una patina nel tempo Finition en métal naturel: une patine se formera avec le temps Natürliche Metallausführung: eine Patina wird sich mit der Zeit bilden
BB BRUSHED BRASS						Natural metal finish: patina will form over time Finitura di metallo naturale: si formerà una patina nel tempo Finition en métal naturel: une patine se formera avec le temps Natürliche Metallausführung: eine Patina wird sich mit der Zeit bilden
AB AGED BRASS						Aged metal finish: patina will form over time Finitura di metallo invecchiato: si formerà una patina nel tempo Finition en métal vieilli: une patine se formera avec le temps Gealterte Metallausführung: eine Patina wird sich mit der Zeit bilden
WH MATT WHITE						Varnished finish: subject to scratches if not properly handled Finitura verniciata: soggetta a deterioramento se non trattata correttamente Finition vernie: sujette aux rayures si ne pas traitée correctement Lackierte Ausführung: Kratzer bei unsachgemäßer Behandlung
BC BRUSHED COPPER						Oxidizable plated finish Finitura placcata ossidabile Finition plaquée oxydable Oxidierbare plattierte Ausführung
RG ROSE GOLD						Plated finish: subject to scratches if not properly handled Finitura placcata: soggetta a deterioramento se non trattata correttamente Finition plaquée: sujette aux rayures si ne pas traitée correctement Plattierte Ausführung: Kratzer bei unsachgemäßer Behandlung
BL MATT BLACK						Varnished finish: subject to scratches if not properly handled Finitura verniciata: soggetta a deterioramento se non trattata correttamente Finition vernie: sujette aux rayures si ne pas traitée correctement Lackierte Ausführung: Kratzer bei unsachgemäßer Behandlung
AI AGED IRON						Plated finish: subject to scratches if not properly handled Finitura placcata: soggetta a deterioramento se non trattata correttamente Finition plaquée: sujette aux rayures si ne pas traitée correctement Plattierte Ausführung: Kratzer bei unsachgemäßer Behandlung
BK BLACK CHROME						Plated finish: subject to scratches if not properly handled Finitura placcata: soggetta a deterioramento se non trattata correttamente Finition plaquée: sujette aux rayures si ne pas traitée correctement Plattierte Ausführung: Kratzer bei unsachgemäßer Behandlung
BBP BRUSHED BRASS PVD						Inoxidizable PVD finish Finitura inossidabile in PVD Finition PVD inoxydable Inoxidierbare PVD-Ausführung
BCP BRUSHED COPPER PVD						Inoxidizable PVD finish Finitura inossidabile in PVD Finition PVD inoxydable Inoxidierbare PVD-Ausführung
NBP NATURAL BRASS PVD						Inoxidizable PVD finish Finitura inossidabile in PVD Finition PVD inoxydable Inoxidierbare PVD-Ausführung